

Clavia USB driver installation guide, using Windows Update

If you are using a computer with Windows XP, Vista or Windows 7 operating systems, Windows Update can be utilized to recognize and install appropriate drivers for the connected Nord unit. Make sure that you are logged in to the computer with an internet connection and administrator privileges before you begin.

- ❗ *Mac OS X users do not have to install a USB driver, the Nord applications and units are natively supported on this platform.*
- ❗ *This guide only applies to the following Nord products: Piano, Stage Classic, Stage EX, Wave, Electro 3 and C2 Combo Organ.*

Windows XP

- 1 Shut down all applications that are running on your computer.
- 2 Connect your Nord unit to the computer with the supplied USB cable and power the Nord unit on.
- 3 Windows will notify you about a new hardware found and automatically start the Found New Hardware Wizard.

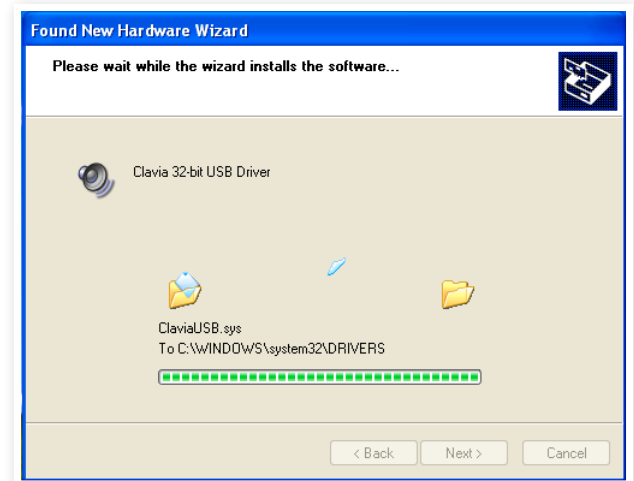


- 4 Read and follow the instructions that appears on screen. Select either of the first two options and press Next to continue.



- 5 In the following dialogue, select the Recommended option (Install the software automatically) and press Next to continue.

- 6 The Wizard will now search for the appropriate drivers online and once found they are copied to your local drivers folder.

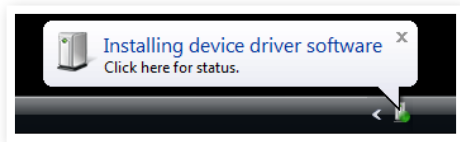


- 7 Once completed the driver will now be activated for the USB port that you connected the Nord unit to.
- ⚠ *If you connect the Nord unit to another USB port, the driver will be activated again.*

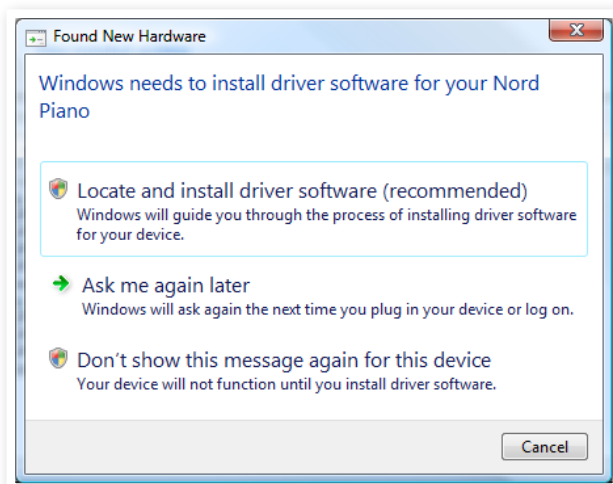
Clavia USB driver installation guide, using Windows Update

Windows Vista and Windows 7

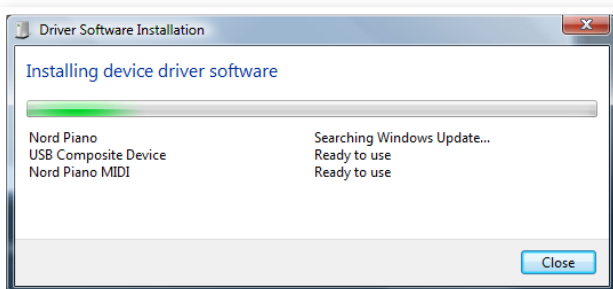
- ① Shut down all applications that are running on your computer.
- ② Connect your Nord unit to the computer with the supplied USB cable and power the Nord unit on.



- ③ Windows will notify you about a new hardware found. In Windows Vista, select the 'Locate and install driver software' option (recommended). In Windows 7 the installation will start automatically.



- ④ Windows Update will now search for the appropriate drivers online and once found they are copied and installed to your operating system.



- ⑤ Once completed the driver will now be activated for the USB port that you connected the Nord unit to.
- ⚠ *If you connect the Nord unit to another USB port, the driver will be activated again.*

Troubleshooting

If you experience any issues with the Windows Update, here are a few things that you can try before you contact the support on the www.nordkeyboards.com website.

- Make sure that no applications are running on the computer when you run the installer, and that includes any anti virus applications and other helper applications that are active in the background.
- Make sure that you are logged in to the computer with administrator privileges.
- If connecting the Nord unit does not activate the driver, try another (and perhaps shorter) USB cable.
- Connect the Nord unit directly to a USB port on the computer, and not via a USB hub or by daisy-chaining it to a computer keyboard.
- If you get stuck, please document all error messages and/or unexpected behaviors and file a support request on the Nord Keyboards website.

System Requirements

The installation guide applies to the following Nord products: Piano, Stage Classic, Stage EX, Wave, Electro 3 and C2 Combo Organ.

The USB driver and the Driver Installer is compatible with Windows XP 32- and 64 bit, Windows Vista 32- and 64 bit and Windows 7, 32- and 64 bit.