

# Nord Factory Restore Instructions

## FACTORY RESTORE

Restoring a Nord instrument to its Factory content with all the sounds and settings is done by using the Nord Sound Manager and downloading a Restore file with all the memory content of the Nord instrument.

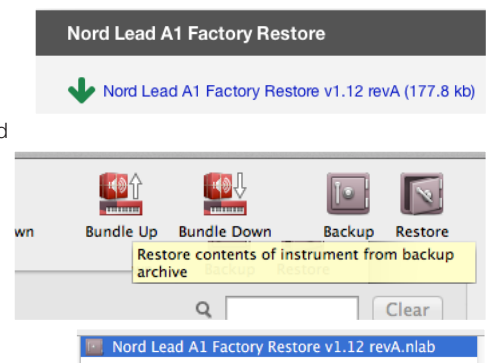
The Restore files are named as Nord **MODEL** Factory Restore **vX.XX revY**. The "vX.XX" version number indicates the operating system version in the Nord instrument, when this Restore file was created. For example: "Nord Lead A1 Factory Restore v1.12 revA".

**i** *It is perfectly safe to use a Restore file with operating systems that are of a higher version. If the operating system in your Nord instrument is older (the currently installed version in your Nord instrument is shown in the display when the instrument is turned on), we recommend that you update the instrument to the latest version available.*

The "**revY**" indicates if the Restore file has been updated in any way. RevA being the first revision, followed by revB and so on.

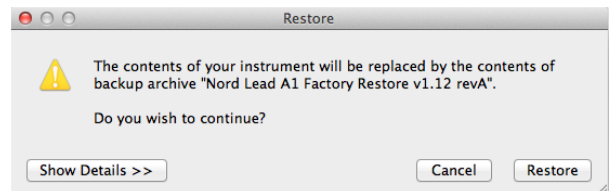
## How to Restore

- 1 Download the Factory Restore file that matches your Nord instrument.
- 2 Make sure the Nord instrument is connected to the computer and launch the Nord Sound Manager.
- 3 Click on the Restore icon in the Nord Sound Manager toolbar. A file browser will appear.
- 4 Locate the downloaded file, select it and click Open.



The Manager will perform some preparations to restore the instrument by first synchronizing the content in the instrument, and then by verifying the files in the Restore file.

- 5 When you click on Restore, all the content in the Nord instrument will be irrevocably replaced by the content from the Restore file.



**⚠** *This operation cannot be undone.*

**⚠** *Do not turn off the Nord instrument or disconnect the USB connection while restoring is in progress.*

## Additional Information

Restoring a Nord instrument with a large memory capacity for samples and pianos (like the Nord Stage 2 or Nord Piano 2) will take some time. Other instruments like the Nord Lead 4 or Lead A1 will be restored quickly.

We recommend you to use the latest operating system in the Nord instrument, the latest version of the Nord Sound Manager and the latest revision of the Factory Restore file.

*This procedure to restore the factory content applies to Nord instruments with a release date around 2005 and later, beginning with the introduction of the Nord Stage Classic. Older Nord instruments are updated with other methods, usually by transferring data via MIDI with the help of a Sys Ex transfer. These instruments have other factory files and instructions on the Nordkeyboards.com website.*